

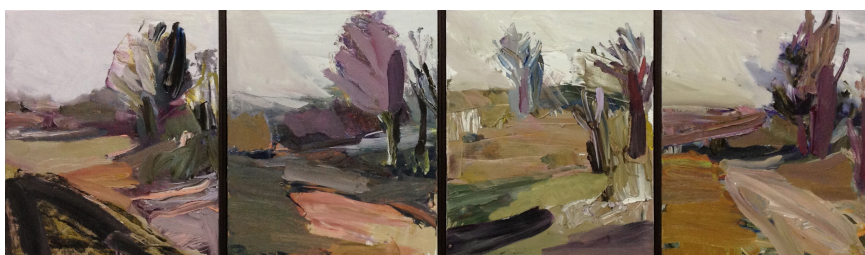


2013 MOSMAN ART PRIZE announcement of VIEWERS' CHOICE AWARD - it's a tie! congratulations to Guy Maestri and Kirsty Neilson

Sydney: It is a dead-heat for the Viewers' Choice Award at this year's Mosman Art Prize.

Artists Guy Maestri and Kirsty Neilson have tied as the most popular paintings as voted by the hundreds of viewers to the 2013 Mosman Art Prize at Mosman Art Gallery in Sydney.

Guy and Kirsty will each receive \$500 – splitting the \$1000 cash prize sponsored by the Mosman Art Society.



Guy Maestri's landscape work, *Autumn, North of Luke's Lane*, is a series of four small oil paintings that capture the seasonal colours of a country lane in the NSW town of Hill End.

The paintings were produced in the course of one day with Maestri working *plein air* in the laneway that runs behind the cottage home of his close friend and artist colleague, Luke Sciberras. Maestri worked quickly, looking in different directions to capture the constantly changing light. The landscape work entered into this year's Mosman Art Prize is a continuation of the artist's Hill End series, one of which won Maestri the 2013 NSW Parliament Plein Air Painting Prize in May. Guy Maestri is winner of the 2009 Archibald Prize for his portrait of Australian singer and musician Geoffrey Gurrumul Yunupingu. Guy won the Commendation Prize, Mosman Art Prize in 2011.

On co-winning the 2013 Viewers' Choice, Guy Maestri said *I'm very pleased to win Viewers' Choice at the Mosman Art Prize. It gives you impetus to head straight back out there again and get painting. It's really great. Thanks. And it's nice to be sharing the award with Kirsty.*

Kirsty Neilson painted a large scale portrait of acclaimed chef, Christine Manfield. After seeing Manfield on TV and learning of the Chef's charity work, Neilson approached Christine to sit for her. Neilson, a portrait and landscape painter based in Sydney's Northern Beaches, is proactive in charity work herself. The artist admired Manfield for her work not only as an internationally recognised Chef, Author, teacher and gastronomic traveller, but as an ambassador for a number of charities – four of which are referenced in the painting. Working to a large scale was a challenge for Neilson – it's her largest work to date - but the artist invites the audience to connect with her subject by focusing on Manfield's face and the drama of her striking green eyes outlined by her (now famous) heavy kohl makeup. Kirsty Neilson was a finalist in the 2007 and 2008 Mosman Youth Art Prize winning the Mosman Art Society/Art Smart Materials Award in 2008.



On co-winning the 2013 Viewers' Choice, Kirsty Neilson said, *I'm overwhelmed. Sharing this award with Guy Maestri is a real honour and I can't wait to tell Christine! It's been wonderful to be a finalist in the Mosman Art Prize - it's such a great exhibition this year – and especially as I was selected for the Mosman Youth Prize a few years back.*



About Mosman Art Prize:

The Mosman Art Prize is Mosman Art Gallery's flagship exhibition showcasing excellence in contemporary painting practice from Australian artists. With a major prize of \$30,000 sponsored by Mosman Council, it is the longest running municipal art prize in Australia. Along with fostering the practice of established and emerging artists, Mosman Art Prize is an acquisitive award that forms the basis of the Mosman Art Collection, a valuable and important survey of Australian painting. The first Mosman Art Prize was held in 1947. Judged by acclaimed artist Lloyd Rees, the inaugural prize was won by a very young Margaret Olley.

2013 Judge, Lucy Culliton declared Rachel Ellis' landscape painting of William Street in Ellis' home town of Bathurst, NSW, as the winner of this year's major prize of \$30,000.

The following artists are awardees for 2013:

- **The Mosman Art Prize - \$30,000 – major award**
(an acquisitive award, sponsored by Mosman Council)
awarded to RACHEL ELLIS for *Bathurst Landscape - William Street, 2012*
- **The Allan Gamble Memorial Art Prize - \$3,000 – for built environment**
(non-acquisitive, sponsored by Mosman Council)
awarded to ALAN JONES for *Kirk Andrews upon Esk #3*
- **The Mosman Art Prize Commendation Prize – \$5,000**
(non-acquisitive, sponsored by Henry Bucks)
awarded to JANELLE THOMAS for *Hide and Seek*
- **Young Emerging Artists' Award (under 35 years) - \$2,000**
(non-acquisitive, sponsored by Fourth Village Providore)
awarded to REMNIM ALEXANDER TAYCO for *Before and After*
- **Mosman Art Society Viewers' Choice Award - \$1,000.**
Co-awarded to GUY MAESTRI for *Autumn, North of Luke's Lane*
Co-awarded to KIRSTY NEILSON for *Australian Chef Christine Manfield*

The 2013 Mosman Art Prize Exhibition closes on Sunday 25 August at 5pm

- ends -

media enquiries please contact: Leah Haynes: leahmhaynes@gmail.com / PH: 0408 419 463

2013 MOSMAN ART PRIZE closing Sunday 25 August

Where: MOSMAN ART GALLERY
cnr Art Gallery Way & Myahgah Road, MOSMAN, 2088, NSW
Open: 7 days, 10am – 5pm
Admission: FREE
Gallery reception: 02 9978 4178
Website: www.mosmanartgallery.org.au

