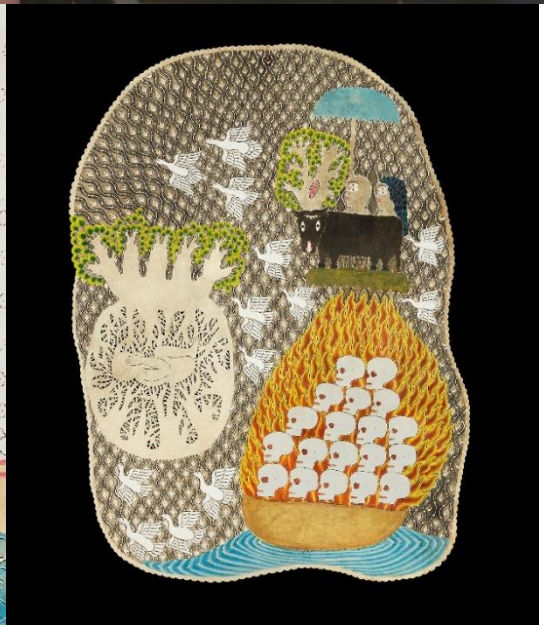
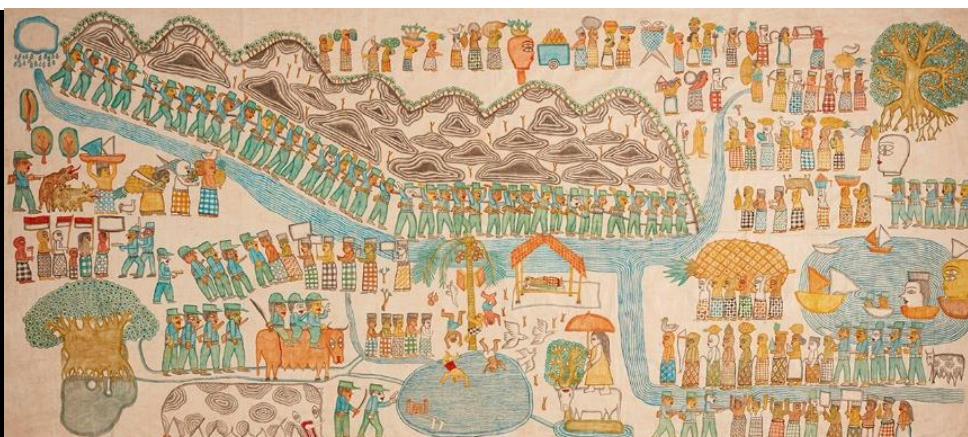


MEDIA RELEASE



NEW EXHIBITION BY INTERNATIONAL ARTIST JUMAADI EXAMINES THE LITTLE-KNOWN STORY OF THE SHARED TRAUMATIC HISTORIES OF INDONESIA AND AUSTRALIA

There is no poem without love or painting without love.

There is nothing without love. Jumaadi.

My Love is in an Island Far Away is a new contemporary art exhibition by international Javanese born artist, Jumaadi, which will open at the Mosman Art Gallery on December 4. This exhibition is part of the Sydney Festival.

"This exhibition is one of the most important exhibitions we have ever staged as Jumaadi is one of the most significant international artists of his generation. This exhibition is about the little-known story of the shared traumatic histories of Indonesia and Australia" said Mosman Art Gallery Director, John Cheeseman.

Jumaadi's exhibition draws inspiration from a major but little-known story in the shared dark histories of Indonesia and Australia. *"Jumaadi has drawn his ideas from one of Indonesia's most notable twentieth century poets, Chairil Anwar and his 1946 work 'Cintaku Jauh di Pulau' (My Love is in an Island Far Away)"*, said Katrina Cashman, Assistant Director and Senior Curator, Mosman Art Gallery.

A central part of the narrative of this exhibition is the brutality of the historical events of the internment of Javanese political detainees who were forcibly removed from Java in the early twentieth century. They lived in exile firstly in the notorious Dutch penal colony of Western Papua in 1927-43 and then eventually in Cowra, NSW in 1943-44 at the request of the Dutch colonists during the second world war. Jumaadi's engagement with these historical events shared between Indonesia and Australia began with the research he undertook at an artist residency in Cowra, NSW in 2005.

The exhibition consists of more than 350 pieces of new work including a huge installation work of a 'house' with 120 paintings on the walls representing the 1200 Javanese detained at Cowra in NSW, an installation of 200 small postcard sized paintings and works on buffalo hide and rice cloth. Jumaadi has had extensive experience in exhibiting internationally. He lives and works both in Yogyakarta and Sydney.

Utilising traditional and contemporary art practices, Jumaadi has explored themes of colonialism, separation, exile, love and independence. Jumaadi's gentle reflections on the concepts of origin, home, migration, love loss, longing and hope have humanity at their heart. His work asks the larger questions about what it is to be human.

"The stories of the two camps in Indonesia and Australia made their indelible impression on Jumaadi and have remained a strong inspiration within his artwork ever since. We are reminded that Dutch authorities arrested about 13,000 Indonesian people, some were shot, some 4,500 were imprisoned and more than 1300 people sent to an isolated camp of which 500 were relocated to Cowra. The detainees included some of Indonesia's most important political thinkers" added Katrina Cashman.

Jumaadi works across a variety of artforms and in this exhibition he has transformed the traditional ideas and artisanal practices of Indonesia into powerful new forms. Jumaadi invites audiences to revisit the past through a new lens of creative imagery that re-imagines these difficult stories through a range of visually arresting and poetic artworks that speak to human resilience, the power of beauty and the enduring nature of love: of people, of culture and country.

The exhibition coincides with the 70th anniversary of the international recognition of Indonesian independence. The exhibition will then travel to Galeri Nasional Indonesia in 2020, marking 75 years since Indonesia's original declaration of independence in 1945. Jumaadi's work will all feature in the 2020 Sydney Festival Program with a commissioned performance series *Island of Shadow*, based on the traditional Indonesian shadow play artform of *wayang kulit*.

About Jumaadi: Jumaadi was born in East Java in 1973. He attended primary and high schools there before moving to Australia to attend the National Art School in Sydney. For over two decades he has been active in the Australian art scene and is recognised internationally within the visual and performing arts, receiving several prestigious residencies and inclusion in important international exhibitions including the Moscow and Jakarta Biennales as well as shows in the UK and USA. Jumaadi works constantly between his studios in Sydney and Java but it is the small, isolated rural village of Imogiri, Southeast of Yogyakarta which remains his primary place of artistic production and inspiration. His beliefs of his Javanese ancestry, with its holistic view of the universe has permeated his art making with the intersection of the natural and the spiritual worlds, primary to his work.

Image captions Left to right:

1. Jumaadi *Tirai hujan [The Curtain of Rain]*_ 2019_ Acrylic on buffalo hide_77 x 96 cm_Photo Tim Connolly
2. Jumaadi *And who is the river and who are the thieves*_ 2019_152 x 330 cm_ acrylic on cotton cloth primed with rice paste_ Photo Tim Connolly
3. Jumaadi in the studio, Imogiri Java July 2019_ Photograph by Katrina Cashman
4. Jumaadi *Between the pinaeapple and the thorns*_(detail)_ 2019_152 x 140 cm_ acrylic on cotton cloth primed with rice _photo Tim Connolly
5. Jumaadi *Panggung waktu [The chamber of time]*_ 2019_(detail)_ acrylic on buffalo hide_80 x 75 cm_ white background _photo Tim Connolly
6. Jumaadi *Perahu api [Skeleton Boat]*_ 2019_ acrylic on buffalo hide_102 x 71 cm_ Photograph by Tim Connolly

Details:

Jumaadi: My Love is in an Island Far Away

4 December 2019 until 9 February 2020

Mosman Art Gallery, 1 Art Gallery Way, Mosman

www.mosmanartgallery.org.au

The exhibition will be accompanied by a large full colour publication with essay contributions by Aaron Seeto, Director MACAN, Jakarta, Professor John Clarke of the University of Sydney and Katrina Cashman, Senior Curator Mosman Art Gallery with A. Sujud Dartanto, Curator of Galeri Nasional Indonesia.

FOR FURTHER INFORMATION PLEASE CONTACT: Susanne Briggs 0412 268 320 or susanneb1@ozemail.com.au

