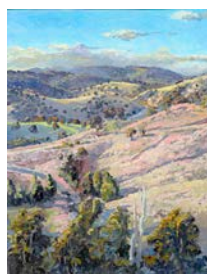


**EYE OF THE BEHOLDER: The Art of Lucy Culliton**  
**Mosman Art Gallery**  
**20 September – 30 November 2014**



***Eye of the Beholder* offers the first survey exhibition on the work of Lucy Culliton – one of the most talented and much loved of Australia’s contemporary painters.**

Launching Mosman Art Gallery’s Spring program, **Eye of the Beholder: The Art of Lucy Culliton**, features more than 130 artworks exploring the artist’s oeuvre from 1997 to 2014 – natural, direct, unpretentious and highly colourful – much like Culliton herself.

An authentic creative spirit with an inexorable passion for her work, Lucy Culliton’s artistic output during this period has been remarkable. Since graduating from Sydney’s National Art School in 1996, Culliton’s career has ascended to the point where she is arguably one of our important representational and most keenly collected contemporary artists.

Culliton appraises her subjects with thoughtful authority, working in series with an intense scrutiny of a single subject. Her gaze consistently moves between Australian and international *plein air* landscapes, domestic still life subjects (food, plants and vintage curios), interiors, portraiture and figurative works.

Winner of the **Mosman Art Prize** in 2000 and **Portia Geach Memorial Award** in 2006, Lucy is also well known as a regular finalist in the Archibald, Wynne and Sulman Prizes at AGNSW and is represented in important public and private art collections.

Mosman Art Gallery has long established a reputation for curating significant survey exhibitions of important living Australian artists who have a connection to the region, including Ken Done, Kerrie Lester and Guy Warren to name a few. Following in this vein the Gallery is thrilled to present this mid-career survey exhibition on the work of Lucy Culliton.

A Mosman Art Gallery exhibition - Senior Curator Katrina Cashman.

Full colour exhibition catalogue with essays by John McDonald and Katrina Cashman now available.

**Lucy Culliton and Katrina Cashman are available for comment.**

To arrange an interview with the artist or curator:

**please contact: Leah Haynes, Exhibition Publicist M: 0408 419 463 – [leahmhaynes@gmail.com](mailto:leahmhaynes@gmail.com)**

***EYE OF THE BEHOLDER: The Art of Lucy Culliton***

**Where:** MOSMAN ART GALLERY - cnr Art Gallery Way & Myahgah Road, Mosman, NSW

**When:** Saturday 20 September - Sunday 30 November 2014

**Open:** 7 days, 10am - 5pm, closed public holidays

**Admission:** Free

**Gallery Reception:** 02 9978 4178

**Information:** [www.mosmanartgallery.org.au](http://www.mosmanartgallery.org.au)

## EDITORS NOTE: About Lucy Culliton

***Painting has given me so much happiness in my life. I wish everyone would do it and experience what I do every day. Lucy Culliton 2014***

Lucy Culliton (b. 1966) lives and works in the hamlet of Bibbenluke, near the town of Bombala, on the Monaro Plains in southeast NSW. Her home, a rambling 1930s deco inspired homestead, is surrounded by a number of out buildings – a converted barn that is her outside studio and several sheds that house a menagerie of animals – “her petting zoo” as she describes it.



Lucy abandoned graphic design at 27 to study fine art at the National Art School, Darlinghurst, graduating in 1996. Even at her grad show people were talking aloud about her work. Within three years Lucy was exhibiting at Ray Hughes Gallery, Sydney, while living and painting around the corner in a cramped terrace basement flat on Crown Street, Surry Hills. Her first exhibition with Hughes in 1999 was of farm animals and equipment inspired by a painting trip to a friend’s farm in the Monaro – it was hugely popular. Fifteen years of sell-out shows has followed.

When her parents moved from the family home in Hornsby to Hartley, west of the Blue Mountains, Lucy joined them a few years later, living in a studio on their property that was built from the proceeds of her winning the prestigious Mosman Art Prize in 2000. The resulting Hartley landscape series was a resounding success and marked a new stage in her artistic development. The move to Bibbenluke and the Monaro has been another.

Although Lucy has travelled afar for painting expeditions, immersing herself into landscapes such as the Flinders Rangers in South Australia, coastal New Zealand, Tasmania, Arizona, USA, outback NSW, the snowfields around Canberra, she is happiest at home, away from the spotlight, observing the changing skies and seasons of the Monaro, painting in her barn studio.

Lucy Culliton is a regular finalist in the Archibald, Wynne & Sulman prizes. She has been awarded the 2006 Portia Geach Memorial Award; 2006 Dubbo Lexis Mortima Prize; 2004 Kedumba Drawing Prize; 2000 Mosman Art Prize and the 1999 Conrad Jupiters Art Prize. Collections include: National Gallery of Australia; Queensland University Art Museum; Griffith University, QLD; Parliament House, Canberra; Macquarie Bank; Gold Coast Arts Centre; Mosman Art Gallery; University of NSW, Art Bank, and many important private collections.

---

## SAVE THE DATES: Mosman Art Gallery Public Program and Special Events:

---

### A selection of special events and public programs for *Eye of the Beholder: The Art of Lucy Culliton*

**Tues 23 Sept, 11.00am – 1.00pm: ART BRUNCH - Lucy and Friends**

**Hosted by Simon Marnie, 702 ABC presenter, with Lucy Culliton, Euan Macleod and Peter O’Doherty**

Join ABC radio personality Simon Marnie in conversation with Lucy Culliton and artists friends over a delightful Brunch and glass of champagne. A fundraising event for Mosman Art Gallery.

**Sun 12 Oct, 11.00am: Curator’s Floortalk with Katrina Cashman**

Gain insights to the artwork of Lucy Culliton with a floor talk from exhibition curator, Katrina Cashman.

**Sat 18 Oct, 10am- 4pm: Master Class with Lucy Culliton**

Workshop for experienced artists: Still Life Painting with Lucy Culliton.

**Thurs 30 October, 10am - 4pm: Masterclass with Lucy Culliton**

Workshop with experienced artists: Still Life Painting with Lucy Culliton.

**Sun 9 November, 10am - 12.00pm: ART FORUM - At the top of their game**

**Hosted by Hannah Gadsby, arts presenter, with Lucy Culliton, Cressida Campbell and Del Kathryn Barton**

Join award-winning Australian comedian and Arts presenter, Hannah Gadsby as she delves into the artistic lives and career paths of three of our most celebrated Australian women artists.

**All public program events require bookings and costs may be involved.**

**For further information please view Mosman Art Gallery website for updates: [www.mosmanartgallery.org.au](http://www.mosmanartgallery.org.au)**

images: LUCY CULLITON, *Lucy with Cock*, 2005, oil on canvas, 75 x 60 cm / *Cactus* 2004, oil on canvas, 101 x 133 cm / *Hartley Landscape*, 2002, oil on canvas, 120 x 90 cm / *Self with subject (Domestic Science)*, 2007, oil on canvas, 70 x 100cm