

Mosman Art Gallery

2025 Program

Mosman Art Gallery

2025 Program

Mosman Art Gallery

2025 Program

Mosman Art Gallery



John Olsen, *Rolling Sea*, and *that Streeton Painting*, 2014, oil on canvas. Mosman Art Collection, donated through the Australian Government's Cultural Gifts Program by John Olsen AO OBE, 2015. Image courtesy Mosman Art Gallery and © the artist's estate

2025

Program

Welcome to 2025 at Mosman Art Gallery. This year is a celebration of our community, artists, environment and heritage. We invite local artists to share their work with us for our regular *Artists of Mosman 2088* exhibition. In May we explore the heritage of Sirius Cove with the exhibition *Curlew Camp*. Paintings from our Collection that were made by artists at the Curlew Camp will be exhibited alongside responses by contemporary painters including Thea Anamara Perkins, Fiona Lowry and Khadim Ali. Local artist Ann Cape shares portraits of other artists which will be exhibited alongside their own work in *A Painter's Painter*. In March we celebrate young artists from across Sydney with the *Mosman Youth Art Prize* and encourage senior students to develop their major works with our HSC Forum. Teachers can join us for our new, regular series of professional development workshops throughout the year, and bring their classes to the Gallery for school excursions.

We celebrate the 78TH year of the Mosman Art Prize in August, then in November we travel around Mosman's edges in

Foreshore, featuring newly commissioned work by artists exploring elements of Mosman's history and the ways in which we interact with this incredible landscape at the water's edge. While exploring Mosman's harbour walks you can enjoy the Mosman Art Trail and find out more about paintings from the Mosman Art Collection in the places where they were made.

Our exhibitions are supported by programs for all ages. We can't wait to share our Collection, Exhibitions and Programs with our community, and help you connect with art, ideas and your neighbours.

ACKNOWLEDGEMENT

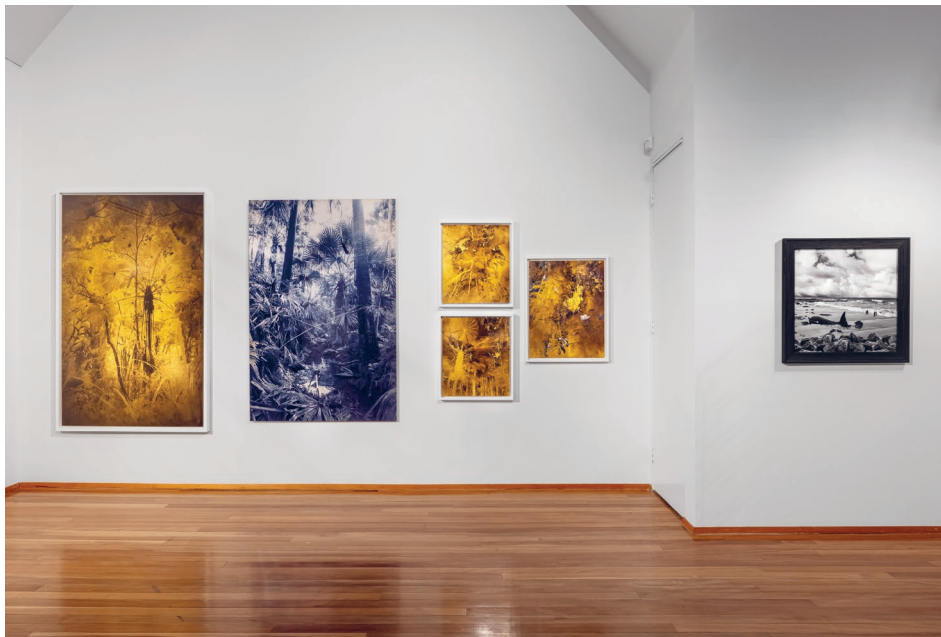
Mosman Art Gallery acknowledges the Borogegal and Cammeraigal people as the traditional custodians of this land. We pay our respects to Elders of the past and present and to those of the future and acknowledge their spiritual connection to Country.

BORROWED LANDSCAPES
Until 2 February 2025
Curated by Kelly McDonald

Borrowed Landscapes features the work of artists exploring and connecting with the Australian landscape and telling stories that have been previously overlooked. Featuring beautiful scenes from the Australian landscape, artists in the exhibition interrogate the grand narratives of colonial history through images that are questioning, unsettling and uncovering culture, connection and knowledge that has been lost.

Featuring: Peta Clancy, Dacchi Dang, Simone Douglas, Yvette Hamilton, Alana Hunt, Danie Mellor, Hayley Millar Baker, James Tylor, Amanda Williams

Supported by



Borrowed Landscapes, installation view, 2024, image courtesy Mosman Art Gallery and the artists © the artists. Photograph: Jacquie Manning

ARTISTS OF MOSMAN 2088
15 February – 16 March
Organised by Althea Kuzman

Artists of Mosman 2088 surveys the region's thriving artistic community and includes works created by Mosman residents as well as Members and Volunteers of Mosman Art Gallery.

Public Programs supported by



Artists of Mosman 2088, installation view, 2025, image courtesy Mosman Art Gallery and the artists © the artists. Photograph: Jacquie Manning

**BETWEEN THE HEADS:
VIEWS OF MIDDLE HARBOUR**
Opens Saturday 12 April
Curated by Lucy Reeves-Smith

A fresh display of works from the Mosman Art Collection, presenting, for the first time, recent acquisitions of 19th and 20th-century paintings and drawings, complementing the well-loved core of works from the Mosman Art Trail and The Balnaves Gift. From April 2025 the Collection Gallery will feature a selection of picturesque landscape views of Middle Harbour, painted by explorers, pleasure-seeking daytrippers and settler residents. These artists documented the progress of maritime industry, celebrating the might of the British Empire and following the urbanisation of Sydney Harbour, on these contested lands of the First Nations owners, who remained absent from their views.



Artworks from the Balnaves Gift, installation view, Mosman Art Gallery, 2024, image courtesy Mosman Art Gallery © the artists' estates. Photograph: Jacquie Manning

MOSMAN YOUTH ART PRIZE
29 March – 4 May
Organised by Althea Kuzman

Since 1988 Mosman Art Gallery has been fostering the next generation of artists through the Mosman Youth Art Prize. Each year hundreds of young artists submit their drawings, paintings, photographs, videos, prints, sculpture and ceramics that form this overview of the artists of the future.

Supported by



Mosman Youth Art Prize, installation view, 2024, image courtesy Mosman Art Gallery and the artists © the artists. Photograph: Jacquie Manning

CURLEW CAMP
17 May - 17 August
Curated by Kelly McDonald

The historic Curlew artists' camp at Sirius Cove was the base for significant Australian painters such as Tom Roberts and Arthur Streeton, who helped foster a new 'Australian style'. The exhibition features paintings from the period, as well as newly commissioned artworks by artists responding to the site, its artistic heritage and the paintings made there.

A PAINTER'S PAINTER
17 May - 17 August 2025
Curated by Ann Cape

Curated by Mosman-based artist Ann Cape, *A Painter's Painter* examines the intimate relationship between portrait artist and sitter. Featuring depictions of some of Sydney's most beloved artists, alongside these artists' own work, viewers are invited into the space shared between artists and everything that space holds.



John Olsen, *Rolling Sea, and that Streeton Painting*, 2014, oil on canvas. Mosman Art Collection, donated through the Australian Government's Cultural Gifts Program by John Olsen AO OBE, 2015. Image courtesy Mosman Art Gallery and © the artist

08



Ann Cape, *Portrait of Kerrie Lester*, 2003, oil on canvas, Mosman Art Collection, donated by Ann Cape, 2016, image courtesy Mosman Art Gallery and © the artist

09

MOSMAN ART PRIZE 2025

30 August – 2 November

Curated by Kelly McDonald and Althea Kuzman

Mosman Art Prize is the premier open painting prize in Australia, attracting over 1,600 entries in 2024 from every state and territory. First awarded in 1947, the winning painting is acquired for the Mosman Art Collection.

FORESHORE

15 November – 2 February 2026

Curated by Kelly McDonald

An exhibition focused on where the land and harbour meet in Mosman and how we have lived on, utilised and enjoyed it throughout history. Examining the Indigenous, military, industrial and leisure history of Mosman's foreshore. This exhibition draws together the work of contemporary artists, with historic works from the Mosman Art Collection.

Proudly supported by

GILLIAN JONES BresicWhitney

colormaker INDUSTRIES VAULT

FOURTH VILLAGE PROVIDORE

MOSMAN ART SOCIETY

GODFREY Wines

THE ALBERT MOSMAN



Mosman Art Prize, installation view, 2024, image courtesy Mosman Art Gallery and the artists © the artists. Photograph: Jacquie Manning



Mosman Foreshore, Sirius Cove, 2023, image courtesy Mosman Art Gallery. Photograph: Jacquie Manning

The Cube

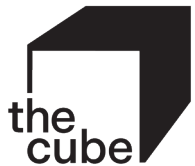
The Cube is an exhibition program dedicated to screen-based, installation and speculative practice. It is supported by the Members of Mosman Art Gallery.

JAZZ MONEY: THIS IS HOW WE LOVE

Until 2 February

Curated by Kelly McDonald and
Althea Kuzman

This Is How We Love is an enveloping multichannel sound installation that invites audiences into a community of sound and love. The poem, originally written by Jazz Money for World Pride in Sydney 2023 was arranged for a choir by composer Joseph Twist. Presented here as an immersive audio work, the piece was recorded with members of the Sydney Gay and Lesbian Choir to emphasise queer systems of care and reciprocity.



Jazz Money, portrait, *This is How We Love*, 2024, image courtesy Mosman Art Gallery and © the artist. Photograph: Jacquie Manning

We Are Studios presents
VIRGINIA BUCKNELL: FROM SHOWGIRL
TO ARTIST, A SYNCHRONISATION
15 February – 16 May
Curated by Kelly McDonald and
Althea Kuzman

Virginia Bucknell describes dance as
'working from the heart'.
From Showgirl to Artist,
a Synchronisation shares the significance
of dance throughout Virginia's life,
in particular her creative journey as a
professional cabaret dancer and how
it continues to inform her practice as a
visual artist.

Virginia's work for The Cube embraces
the evolution of her movements, style and
physicality as a dancer, whilst expanding
on the soulful way dancing has remained
part of her life, as a form of improvisational
performance and as a critical theme within
her paintings.

Presented by

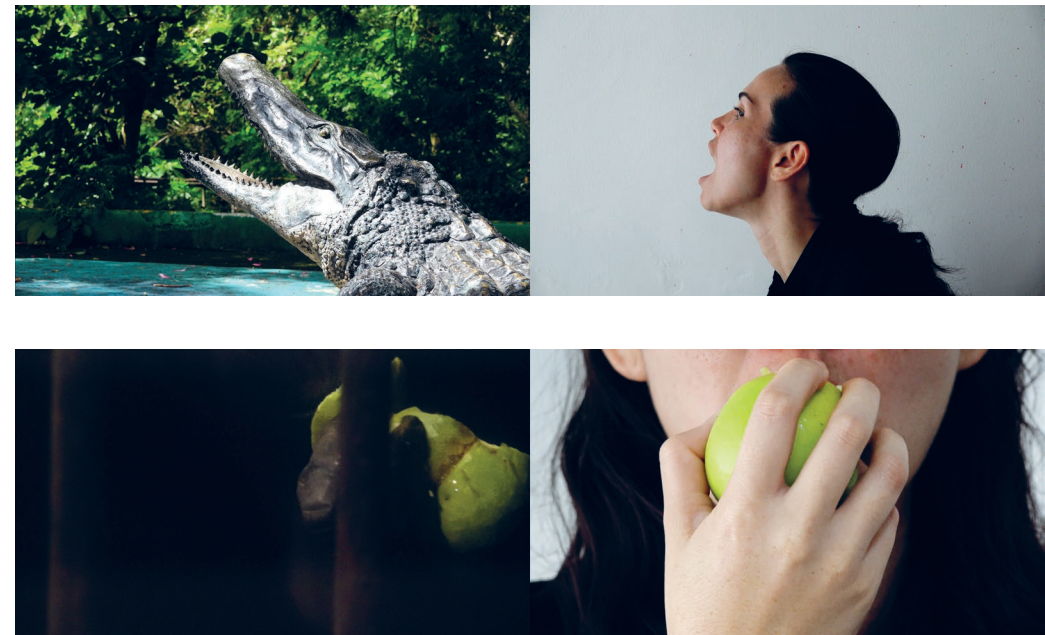
WE ARE 
STUDIOS



Virginia Bucknell, *From Showgirl to Artist: a Synchronisation* (still) 2024, two-channel
video and stereo sound, image courtesy and © the artist

AMRITA HEPI: SCRIPTURE FOR A
SMOKESCREEN: EPISODE 2 BABY BABY
YOU'RE A NATURAL
17 May – 10 August
Curated by Althea Kuzman

Amrita Hepi repositions ideals of human
communication to mine an experience
of transference with animals. Shot in
two different zoos using available phone
equipment, Amrita considers captivity, as a
choreographer and vessel, and how zoos are
agents of socialization inextricably linked
to mass communication. This alternative
approach looks at adjacent technologies,
how they implicate us in mass archiving of
colonial monuments.



Amrita Hepi, *Scripture for a smokescreen: Episode 2 BABY BABY YOU'RE A NATURAL*, (still), 2024, two-channel
video and stereo sound, image courtesy and © the artist

REMY FAINT

30 August – 2 November

Curated by Kelly McDonald and Althea Kuzman

Remy Faint is an emerging artist based on Gadigal-land Sydney. Working across diverse media including painting, sculpture and installation – his practice is motivated by the desire to expand languages of abstraction by examining its global histories. Drawing upon influences from collection-based objects and materials specific to his Chinese-Australian heritage, his work mediates both painterly and sculptural ‘silhouettes’ to reflect on themes surrounding visibility, national identity and folklore.



Remy Faint, *Apparition Loom*, 2024, Create NSW Visual Arts Fellowship (Emerging), image courtesy the artist and Artspace, Sydney, © the artist. Photograph: Anna Kucera

ALEX SETON

15 November – 1 February 2026

Curated by Althea Kuzman

Alex Seton’s artistic practice incorporates sculpture, photography, video and installation to examine problematic ideas and concepts and give them form. Always carefully considered, Seton’s artworks playfully sit at the junction of an idea, forcing a choice in the viewer as a litmus test of their own disposition. Whether contemplating notions of nationhood, legacy and privacy or the problematic relationship between individual and society, the personal and cultural always collide in his work in a complex relationship between form and substance.



Alex Seton, *Everything was Beautiful, and Nothing Hurt*, 2022, Soda Glass, nylon, steel, marble offcuts, Glassblower: Katie Ann-Houghton, image courtesy The Lock-Up, Newcastle and the artist © the artist. Photograph: Mark Pokorny

InProfile

InProfile an exhibition program dedicated to local artists.

JENNIFER BLAU

Until 2 February 2025

Curated by Althea Kuzman

Living in an enchanted cottage overhanging the water near Chinaman's Beach in Mosman for 35 years, photographer Jennifer Blau explores the feeling of living in a perpetual state of uncertainty. Like the house, Blau was suspended between firm, familiar ground and feeling "all at sea".

KEITH RUTHERFORD

8 February – 4 May 2025

Curated by Althea Kuzman

Keith Rutherford is an artist living with an eye condition known as Stargardt disease. Keith turned his struggle into a positive and pursued his mark making with renewed vigour.

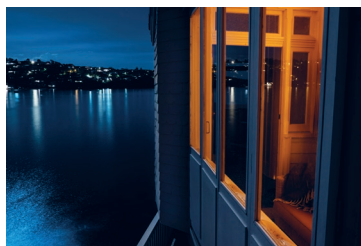
MADISON BAIRD

10 May – 3 August

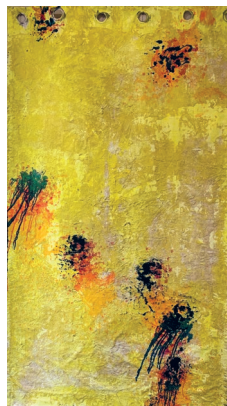
Curated by Althea Kuzman

Madison Baird is an Australian-born artist working on Gadigal land. Baird's practice encompasses a range of bush landscapes, still life and figurative works. Exploring human relationships and the emotional reprieve found in nature.

Over the past few months spending time painting in the blue mountains (Dharug and Gundungarra land) Baird was inspired by the vibrant colours of the land shifting from winter to spring, watching the bush in a constant state of flux, and noticing the abundance of life that comes out both night and day.



Jennifer Blau, Leaving home, 2023, from the series Between Me and the Sea, archival pigment print on cotton rag, image courtesy and © the artist



Keith Rutherford, Stargardt Holes I, 2020, oil and sand on polyester acrylic canvas, image courtesy and © the artist



Madison Baird, Night Lilies, 2024, oil on canvas, image courtesy and © the artist

LEANNE TOBIN

9 August – 19 October

Leanne Tobin is a multidisciplinary artist of Irish, English and Aboriginal heritage descending from the Buruburong and Wumali clans of the Dharug, the traditional Aboriginal people of the Greater Sydney region.

Leanne works both independently and collaboratively to tell stories of 'place'. Her art practice seeks to inform and to also inspire open and honest dialogue while evoking an environmental conscience and respect towards Ngurra (Country) and its original people.

LIAM BENSON AND THE MOSMAN EMBROIDERERS' GUILD

8 November – 1 February 2026

Textile artist Liam Benson will collaborate with the Mosman Embroiderers' Guild through a series of workshops, that focus on the exchange between foundational and experimental textile practice. As a process driven collaboration, the exchange will inform a combination of short and long term outcomes within each makers textile practice.



Leanne Tobin, Korea, digital illustration, image courtesy and © the artist



Liam Benson, Dew, 2022, lace, organza, diamantés, glass seed beads, acrylic beads, faux pearls, crystal glass faceted beads, glass bugle beads, cotton, sequins, image courtesy and © the artist. Photograph: Jacquie Manning



Public Programs

For dates and bookings please visit mosmanartgallery.org.au or contact publicprograms@msoman.nsw.gov.au

WEDNESDAY NIGHT LIGHTS

Wednesdays until 8pm

Mosman Art Gallery's ongoing program of Artist and Curator Talks, Professional Development Workshops for Artists, Sip and Sketch and Guided Tours as the Gallery stays open late. Hear from artists, curators or our Guides, or enjoy night-time viewing of our exhibitions.

SIP AND SKETCH

Learn drawing skills from artists while enjoying a glass of wine with fellow art-lovers. All skill-levels are welcome.

GUIDED TOURS

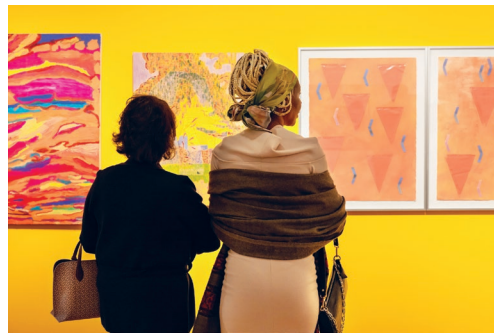
Join Mosman Art Gallery's welcoming and knowledgeable Gallery Guides for a tour of our exhibitions for adult and community groups. The Collection and Exhibition Highlights tours are regularly scheduled and provide insight into the stories behind the artwork and artists in the Gallery's changing exhibition program. Private tour bookings are available.

PROFESSIONAL DEVELOPMENT FOR ARTISTS

Join our regular series of professional development workshops for artists. Hear from experts and learn more about professional practice, while connecting with fellow artists and growing your network.

MAG AFTER DARK

A social program for young adults aged 18-24 held at Mosman Art Gallery in collaboration with Mosman Youth Services.



2024 Mosman Art Prize, installation view, 2024, image courtesy Mosman Art Gallery and the artists, © the artists. Photograph: Jacquie Manning



Sip and Sketch workshop, 2024, image courtesy and © Mosman Art Gallery



Dacchi Dang with his work from the series *The Microdot*, 2024, image courtesy and © Mosman Art Gallery

Art and Wellbeing Programs

A PICTURE OF HEALTH

Monthly on a Thursday
10:30am-12pm

Mosman Art Gallery and Mosman Community Care host monthly guided tours and artmaking for people living with dementia and memory loss and their family or friends. Join us to discuss the artworks in current exhibitions whilst discovering the health and social benefits of life-long learning in a supported environment.

Free, booking essential
Mosmanartgallery.org.au
Mosman Community Care on 9978 4119

Supported by

Community Bank
Mosman

 Bendigo Bank

CREATIVE CAREGIVERS: ART & WELLBEING SESSIONS

Monthly on a Wednesday
10:30am-12pm

Tailored specifically for those who dedicate themselves to caregiving roles, this program offers a unique opportunity to explore creativity while focusing on personal wellbeing. Partnering with Mosman Community Care, these sessions happen monthly on Wednesday mornings and focus on providing a supportive environment where carers can recharge, connect with others, and discover the transformative power of art for their own wellbeing.

Free, booking essential
Mosmanartgallery.org.au
Mosman Community Care on 9968 4119



A Picture of Health Tour, 2024, image courtesy and © Mosman Art Gallery



Creative Caregivers, 2024, image courtesy and © Mosman Art Gallery

AUDIO-DESCRIBED AND TACTILE GALLERY TOURS

Mosman Art Gallery hosts innovative accessibility programs tailored for individuals with low vision / blindness, aimed at delivering immersive art experiences. Through descriptive audio guides and tactile elements, visitors with low vision can now delve deeper into our exhibitions, experiencing art in a multisensory way. At Mosman Art Gallery, we are committed to fostering an inclusive and accessible art environment for all, inviting everyone to engage with creativity in meaningful ways.

Free, booking essential
[Mosmanartgallery.org.au](https://mosmanartgallery.org.au)



Audio-described and Tactile Tour, 2023, image courtesy and © Mosman Art Gallery



Audio-described and Tactile Tour, 2023, image courtesy and © Mosman Art Gallery

Kids and Families

For dates and booking, please visit mosmanartgallery.org.au

BABY ART

Mosman Art Gallery hosts a program dedicated to parents and carers with young babies, focusing on art and wellbeing. These sessions offer a peaceful, inclusive environment where caregivers can engage in art appreciation and wellness activities while bonding with their little ones.

ART EXPLORERS

Art Explorers, is a free drop-in art-making session designed for preschoolers and their grown-ups. Led by an Artist Educator, this monthly program encourages early art appreciation and creative learning by engaging with the artworks exhibited in our Gallery space. Guardians are encouraged to stay and participate alongside their children.

Supported by

Community Bank
Mosman



Art Explorers is proudly supported by Bendigo Community Bank, Marlen Zilinsky and one private donor.



Art Explorers, 2024, image courtesy and © Mosman Art Gallery

ART NOW: SCHOOL HOLIDAY PROGRAM

Calling all young artists-in-the-making! Art Now is a school holiday program for primary school-aged children who want to dive in to making art with new materials and contemporary artist's practices. Led by Artist Educators, our workshops are tailored to suit different age groups, with new artists and fresh perspectives for each holiday throughout the year.

Bring your lunch and a friend or two!

SCHOOL EXCURSIONS

The Gallery's Education Program offers students the opportunity to engage directly with works of art through a dynamic, changing exhibition program. Teachers are supported through a range of digital resources available on our website, and our Professional Development evenings for teachers designed to inspire/equip educators with innovative strategies to bring art into the classroom.

For dates and booking, please visit mosmanartgallery.org.au or contact: education@mosman.nsw.gov.au

EDUCATORS' PROFESSIONAL DEVELOPMENT EVENINGS

Our professional development evenings are designed to inspire/equip educators with innovative strategies to bring art into the classroom. These evenings feature hands-on workshops, strategies for engaging with artworks in the gallery, and a time for teachers to connect with others and be re-energised in their professional roles.



Art Now school holiday program, 2023, image courtesy and © Mosman Art Gallery. Photograph: Jacquie Manning



Queenwood Girls School Excursion, 2024, image courtesy Mosman Art Gallery and Queenwood School for Girls



Educators' Professional Development Evening, 2024, image courtesy and © Mosman Art Gallery

Mosman Art Collection

The Mosman Art Collection is at the heart of Mosman Art Gallery and includes over 800 paintings, drawings and works on paper. These artworks tell different stories from Mosman, its people and heritage and are held in our care on behalf of the people of Mosman. The Collection spans paintings made in the Curlew Artist Camp at Sirius Cove, to contemporary works by artists such as Caroline Rothwell, Wendy Sharpe and Philip Wolfhagen. You can view key works from our Collection in our Collection Gallery, located on the ground floor and on our website.

You can help us grow the Mosman Art Collection by donating artworks that align with the Mosman Art Collection Policy. Artwork donations made through the Australian Government's Cultural Gifts Program are tax deductible and are held in perpetuity for the people of Mosman.

Actively collecting since 1947, the Gallery is dedicated to conserving and exhibiting the social and cultural history of our region to audiences of all ages. In 2022, with the generosity of the Mosman community together with a matched funding initiative from The Balnaves Foundation, the Gallery were able to establish our Acquisition Fund and acquire Imants Tillers, *Factum I*, 2022, and this year we are raiding funds to acquire the commissioned work by Thea Anamara Perkins for the Curlew Camp exhibition.

For more information, please contact philanthropy@mosman.nsw.gov.au



Leila Jeffreys, *Ornithurae* (detail, still), 2018, video 6 mins 20 secs, edition 6 of 6. Donated through the Australian Government's Cultural Gifts Program by Leila Jeffreys, 2023, image courtesy and © the artist

Mosman Art Trail

The Mosman Art Trail is a unique cultural walk along the Mosman foreshore which allows you to follow in the footsteps of famous artists and explore the stunning harbour landscapes that inspired them. The Trail is a series of 12 permanent signs at different locations where the artist captured the view on canvas. Each sign reproduces an artwork from the Mosman Art Collection and The Balnaves Gift, a group of significant works depicting Mosman donated by long-term Mosman resident, businessman and philanthropist, Neil Balnaves AO. The Trail is accompanied by audio on each work read by actor Claudia Karvan, available via QR code on each sign and the Gallery website.

Meander the 10km circuit at your own pace, or explore shorter sections and revisit with family and friends. The walk is suitable for most ages including children (with steps in some places). Several signs are accessible via wheelchair.

Find this on our website, please visit mosmanartgallery.org.au/exhibitions/mosman-art-trail

Supported by



PUBLIC ART

The Mosman Art Collection extends beyond the walls of the Gallery in the form of public art around Mosman. Several artworks are located on the terrace outside the Gallery and throughout Mosman including a recently installed work at Reservoir Park by local celebrated artist Anne Ferguson. Italian Cities, *Walls II*, c.1986 from the *Labyrinth* series, was generously gifted by Peter Jackson and Yvon Gatineau through the Australian Government's Cultural Gifts Program.



Mosman Art Trail signage, 2024, image courtesy and © Mosman Art Gallery



The artist Samantha Stephenson with *Nest*, steel and paint 2023. Mosman Art Collection; Donated by Melissa Fairbairn & Jonathan Wachman, 2023 in memory of their parents Diane & Stanley Wachman. image courtesy the artist and Mosman Art Gallery, © the artist. Photograph: Mosman Council

ACQUISITION FUND

In 2022, with the generosity of the Mosman community and matched funding from The Balnaves Foundation, the Gallery established an Acquisition Fund, with a significant art work acquired each year to build the Mosman Art Collection. Since its establishment the Acquisition Fund has acquired key works including Imants Tillers *Factum I*, 2022 exhibited in *Imants Tillers: The Mosman Years* and *New Acquisitions*; Arthur Streeton's pencil and watercolour sketch, *Sydney from Mosman* demonstrating the artist's lively working process; and the most recent, a commission by the artist Thea Anamara Perkins, an Arrernte and Kalkadoon artist whose practice of landscape and portraiture explores and responds to what it means to be Indigenous in Australia today. This work will feature in the exhibition *Curlew Camp*. By supporting the Acquisition Fund you are helping us bring key artworks into the collection for future generations to learn from and enjoy.

For more information, please contact philanthropy@mosman.nsw.gov.au



Arthur Streeton, *Sydney from Mosman* (detail), c. 1914-1918, pencil, and wash on paper. Mosman Art Collection; Donated by members of the Mosman Art Gallery Acquisition Fund, 2024. Image courtesy the artist and Mosman Art Gallery, © the artist

CONSERVATION FUND

Contribute directly to the care, development and conservation of our much-loved collection. Mosman Art Gallery collection is home to some of Australia's most treasured impressionists and contemporary works including works by Grace Cossington-Smith, Margaret Preston and Tracey Moffat, to name a few.

Together with your support we have already conserved 100 key works in the Collection. However, with 700 to go, conservation is an ongoing project. We invite you to join the Conservation Fund to ensure that all works are cared for and protected in the best possible way for years to come

CULTURAL GIFTS PROGRAM

Make a lasting impact on future generations by sharing artworks from your well-loved collection. Some of the most popular artworks in the Mosman Art Collection have been donated by members of our community, including The Balnaves Gift from Mosman resident Neil Balnaves AO and John Coburn's, *Summer*, c. 1976 tapestry located in the Barry O'Keefe Library; a gift from 12 Mosman residents lead by Justice Barry O'Keefe AM QC.

Mosman Art Gallery accepts donations of art work through the Federal Government's Cultural Gifts Program. This initiative promotes the donation of important cultural items to public art galleries by providing donors with a tax deduction for the agreed market value of their donation. We welcome the opportunity to discuss with you proposed donations of art work, and in addition can provide information on the Gallery's Collection Policy, along with advice on the Cultural Gifts Program and contacting approved valuers.

Making your private works of art public will only make art more accessible for generations to come and to be enjoyed by over 90,000 visitors annually.



Matteo Volonté, International Conservation Services, conserving John Olsen's *The Rollins Sea and that Streeton Painting* 2015, oil on canvas. Mosman Art Collection; Donated through the Australian Government's Cultural Gifts Program by John Olsen AO OBE, 2015. Image courtesy Mosman Art Gallery and © the artist's estate



Albert Henry Fullwood, *Sydney (Fireworks on the Harbour)*, 1897, ink and wash on paper. Mosman Art Collection; Donated through the Australian Government's Cultural Gifts Program by Denis Savill, 2024. Image courtesy the artist and Mosman Art Gallery, © the artist. Photograph: Jacquie Manning

Support Us

DONATE TODAY

Through your generosity, Mosman Art Gallery can offer programs that support members of the community with access needs, grow and conserve the Mosman Art Collection, deliver First Nations programs and provide education and access programs and resources. You can also talk to the Gallery about leaving a Bequest, supporting the specific element of our program that is most significant to you.

Your dedicated support, no matter how big or small, makes our artistic programs possible and ensures our long-term success. We encourage you to consider joining our Creative Circle donor group, with donations over \$1,000 automatically granting you access to the Creative Circle, where you can meet some of Australia's leading artists, curators, gallerists and collectors across a range of events.

From as little as a gold coin donation to annual giving and living bequests, your contribution will directly support the engagement of arts in our community.

As part of the Creative Circle you will enjoy:

- Invitations to Mosman Art Gallery exhibitions and off-site projects
- Invitations to VIP events, private dinners and exhibition previews
- Exclusive curatorial tours and artist walk-throughs to select exhibitions
- Acknowledgement of your support in the Mosman Art Gallery entrance and gallery website

All donations over \$1,000 automatically grant you access to the Creative Circle, where you can meet some of Australia's leading artists, curators, gallerists and collectors across a range of events.



Damian Showyin and Ken Done AM at the opening *Damian Showyin: Suede Blue*, Mosman Art Gallery 2024. Photograph: Cassandra Hannagan



Creative Circle member event at the home of gallery supporter Dr Timothy Liaw, 2024. Image courtesy Mosman Art Gallery and the artists. Photograph: Jacquie Manning

BEQUESTS

A bequest is a wonderful way to give back to Mosman Art Gallery, and to have a significant impact on enriching our art-loving community with a legacy now and for future generations. Bequests enhance our collections, expand our programs and are an everlasting tribute to the generosity of our supporters.

“Our bequest to the Mosman Art Gallery was made following a happy association with the gallery since the opening in 1998. Consisting of works by two prominent female artists, Margaret Olley, winner of the inaugural Mosman Art Prize in 1947 and, Lucy Culliton, the winner in 2000, we saw our bequest as an opportunity to leave a gift to the Mosman community to be enjoyed by future generations”
– Brian and Carol Carrigan

If you would like to discuss leaving a bequest please contact Philanthropy, 02 9978 4164
philanthropy@mosman.nsw.gov.au

CORPORATE PARTNERSHIPS

Connect with contemporary art and artists by aligning your company or brand with a leading cultural organisation in Sydney. With over 90,000 visitors annually and a dynamic, ever-changing program of exhibitions and events, there are numerous pathways to connect with a variety of audiences. A corporate partnership with Mosman Art Gallery is a great way to gain high exposure and be immersed with the community around us.

This year we celebrated 13 years of a successful partnership with Mosman Youth Art Prize and Audi Centre Mosman, culminating in two custom wrapped Audi's on public display and one painted by Mosman youth!

If you would like to discuss tailoring a partnership please contact Philanthropy, 02 9978 4164
philanthropy@mosman.nsw.gov.au



Donor video series, Brian and Carol (still), 2024, image courtesy and © Mosman Art Gallery and Motel Picture Company



2024 Mosman Youth Art Prize Opening, image courtesy and © Mosman Art Gallery. Photograph: Jacquie Manning

BECOME A MEMBER

Join the life of our diverse and vibrant program of exhibitions and events. MAG Members are an integral part of the history and continued legacy of the Gallery and contribute to our growing audience and exciting programs.

As a Member of MAG, you can join a community of fellow art lovers and supporters for social events throughout the year. There are also the benefits of discounted tickets to exhibitions and events including artist talks, excursions, workshops and a discount on purchases at the Gallery shop.

Membership benefits:

- Invitations to all exhibition openings
- Invitations and discounts to Wednesday Night Lights and other public programming events
- Free entry into selected openings and events
- Eligible to submit work into the 2088: Artists of Mosman exhibition
- Members Bus Tours – 4 outings per year to visit local and regional galleries with other members of the gallery
- Discounts for Art Now and other kids education programs
- 10% off purchases at the Gallery Shop
- Discounts from partner stores: 10% off The Albert Hotel when booking directly, 20% off Godfrey Wines, discount on Ensemble Theatre subscriptions and art supplies at Art Smart Seaforth, Giveaways and special offers from many partner stores
- Magazine discounts
- Subscription to the MAG e-newsletter

Membership prices	1 year	3 years
Dual (both must be at same address)	\$70	\$140
Individual	\$55	\$110
Concession	\$33	\$66
Student (full time)	\$22	\$44
Family (2 adults and up to 4 kids)	\$88	176
Teacher	\$40	\$80

Join in person or online via our website.



Gary Grealy artist talk for Members, 2024, image courtesy and © Mosman Art Gallery



Members Tour, Art Gallery of NSW, 2024, image courtesy and © Mosman Art Gallery

GALLERY SHOP

Visit the Gallery Shop, browse our selection of ceramics, scarves, glass art, stationery, jewellery, bags, leather goods and a range of unique quirky giftware, exhibition catalogues and books. Gallery Members receive 10% discount on purchases.

VENUE HIRE

Mosman Art Gallery and Community Centre offers versatile spaces for hire. Our venues are ideal for events, ranging from weddings to community groups, corporate functions, musical performances or meetings. The Centre is well equipped with tables, chairs, a commercial kitchen, AV equipment, a grand piano and accessibility features.

If you have any venue hire enquiries please contact gallery@mosman.nsw.gov.au or 02 9978 4178.

MOSMAN MARKETS

The Mosman Market brings charm to the Village Green on the first Saturday of the month! Explore the unique stalls finding handmade goods, home essentials, jewellery and more. Enjoy tasty treats and live entertainment on your morning stroll. Mosman Council also hosts four Night Markets annually, lighting up and bringing a lively buzz to the heart of Mosman.

Mosman Markets are an all-weather event. Keep an eye on our social media for updates or visit mosman.nsw.gov.au/recreation/markets



Mosman Art Gallery and community centre, 2022, image courtesy and © Mosman Art Gallery. Photograph: Jacquie Manning



Mosman Night Market, 2024, image courtesy and © Mosman Council. Photograph: Ben Williams

SUPPORTERS

Mosman Art Gallery gratefully acknowledges our generous supporters

PROJECT PARTNERS

International Conservation Services
NSW National Parks & Wildlife Services
Sydney Harbour Federation Trust
The Balnaves Foundation

EDUCATION PARTNERS

Bendigo Bank

EXHIBITION PARTNERS

Audi Centre Mosman
BresicWhitney
Fourth Village Providore
Ken Done Gallery
Mosman Art & Framing
Mosman Art Society
NS Audiology
Rotary Club of Mosman
The Albert Hotel Mosman

MAJOR GIFTS

Neil Balnaves AO
Ken Done AM
Dr John Yu AC

BEQUEST

Phillipa Morris

LIVING BEQUEST

Brian & Carol Carrigan
Anonymous

VISIONARY

Sally & Reg Richardson AO
Gillian Jones & the late Brian Jones

TRAILBLAZER

Cathy & Andrew Cameron AM
Ingrid Kaiser
Susan Rothwell*

CHAMPION

Charlene & Graham Bradley AM**
Elizabeth Ramsden*

ADVOCATE

John Charrington & Pamela McBride
Christine Fraser**
Lisa Paulsen*
Andrew & Philomena Spearritt*
Dr John Yu AC

CREATIVE CIRCLE

Peta Badgery*
Guido & Michelle Belgiorno-Nettis
Bryan Besly OAM
Teresa Biet
David Carment AM**
Simon Chan AM Art Atrium
John & Jenny Cheeseman
Lynne Crooks OAM*
Judy & Ken Done AM
John & Ros Eldershaw
Jill Giles
Sandy Godfrey – Godfrey Wines
David & Jan Hogan
Virginia Howard OAM & Bill Taylor
Emily Kate Jackson
Matthew Jones
Dr Timothy Liauw
Christine AO and David Liddy
John and Kylie Lucchese
Ruth McGeechan*
Sharon Miskell
Jonathan Phillips AM & Irene Sniatynskij*
Marshall & Caroline Phillips*
Clare & the late Paul Stockdale
Howard Tweedie
Xiaoxiao Zhang – CBD Gallery
Anonymous x 5

ART EXPLORER SUPPORTERS

Bendigo Bank
Marlen Zilinsky
Anonymous x 1

* Acquisition Fund Mosman Art Collection
** Conservation Project Mosman Art Collection

Mosman Art Gallery
1 Art Gallery Way
Mosman 2088 Australia

Boroegal and
Cammeraigal Country

mosmanartgallery.org.au
gallery@mosman.nsw.gov.au
+61 2 9978 4178

Thursday–Tuesday: 10am–4pm
Wednesday: 10am–8pm
Public holidays: Closed

Free admission
Wheelchair accessible

Subscribe to our newsletter and
follow us on social media
Instagram: mosmanart
Facebook: mosmanartgallery

